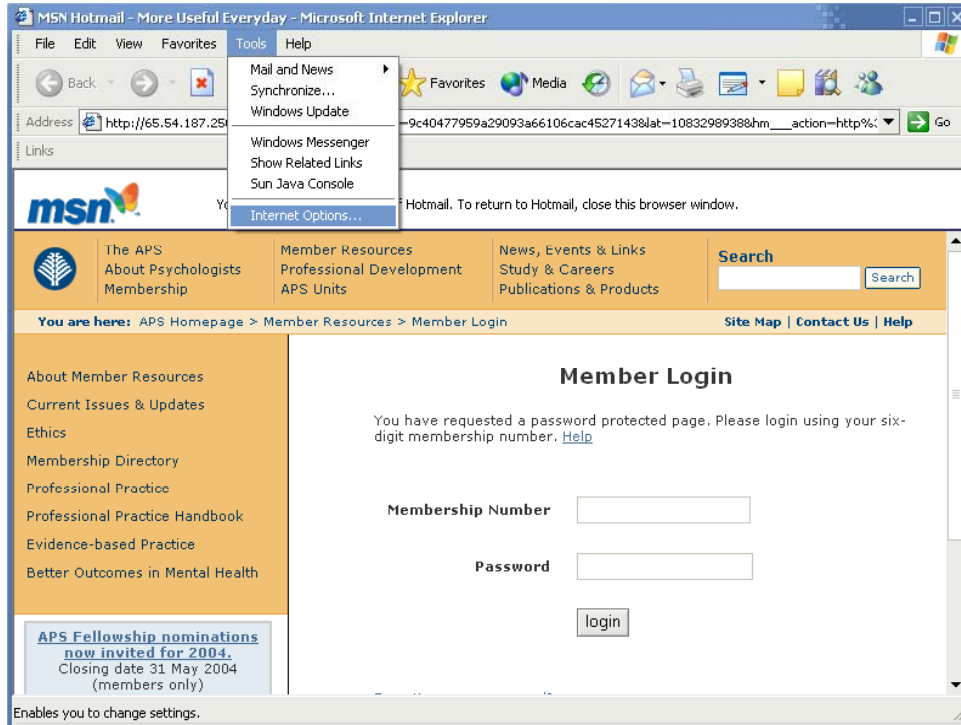


APS Member login problems:

If you get an error message when you login via a link from APS Matters, follow the steps below:

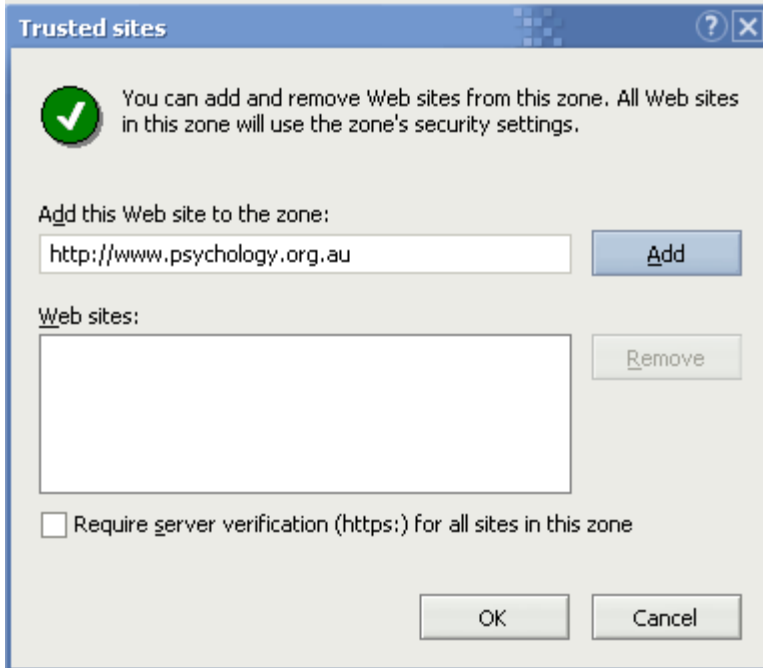
- Step 1: Select “Tools > Internet Options”.



- Step 2: In the window that pops up, click the “Security” tab, then click on the green “Trusted Sites” icon, and then click the “Sites” button.



- Step 3: Add the <http://www.psychology.org.au> site to the zone by typing in the URL, then clicking the “Add” button;
- Deselect the ‘Require Server verification...’ at the bottom of the box; Then click the “OK” button.



- Step 4: Log in to the APS site – this should now work successfully.

Additional ‘Help’ items can be found on the APS website at www.psychology.org.au/help.asp